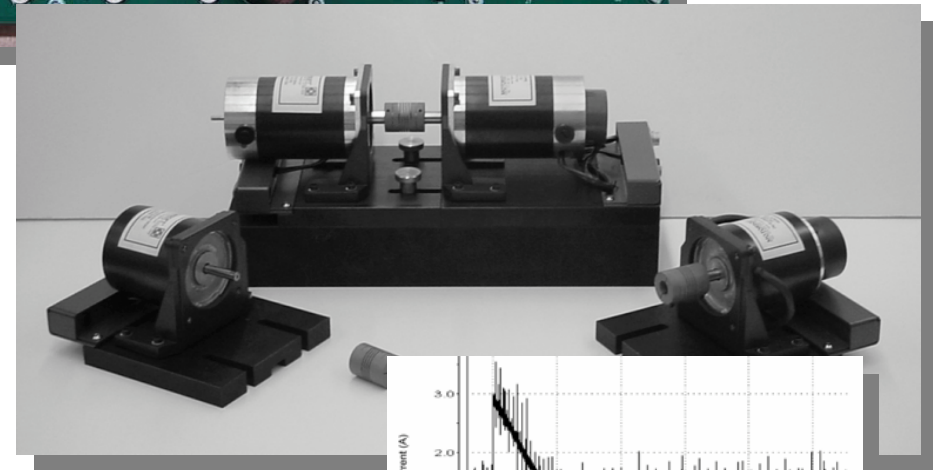
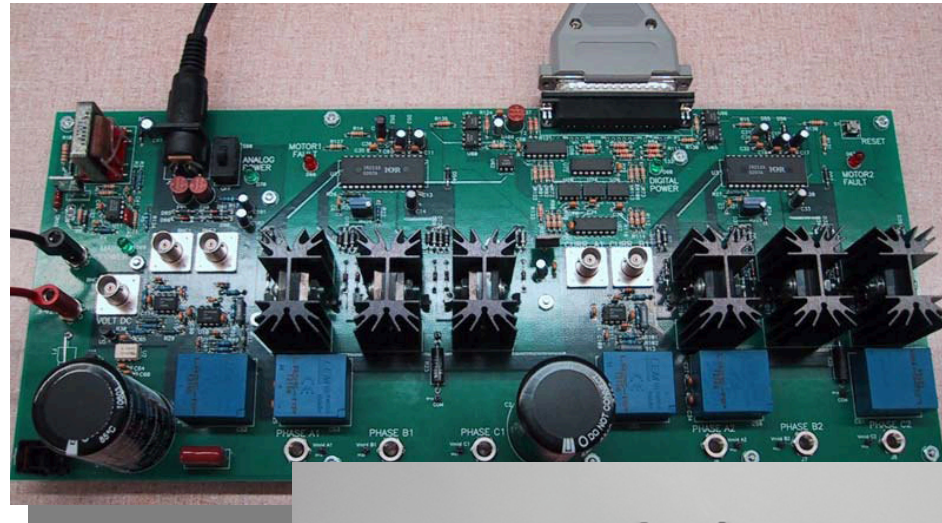
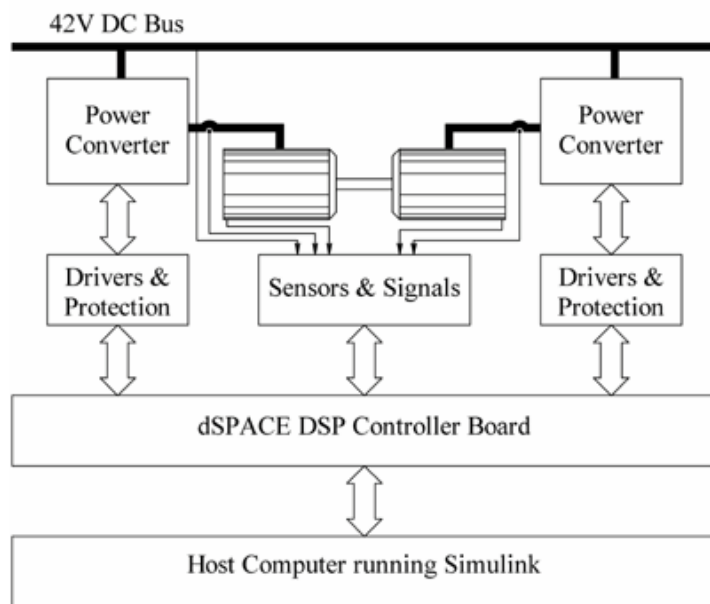


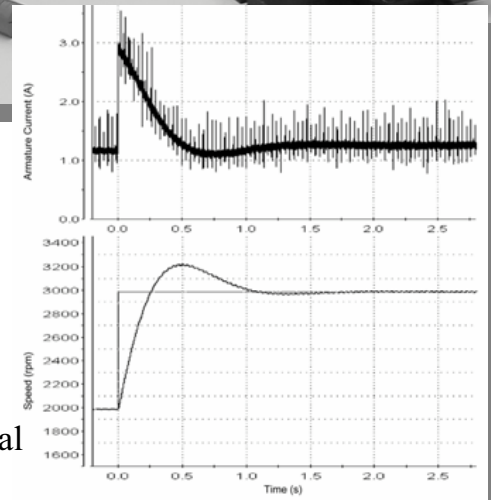
Reconfigurable DSP-Based Electric Drives Lab*

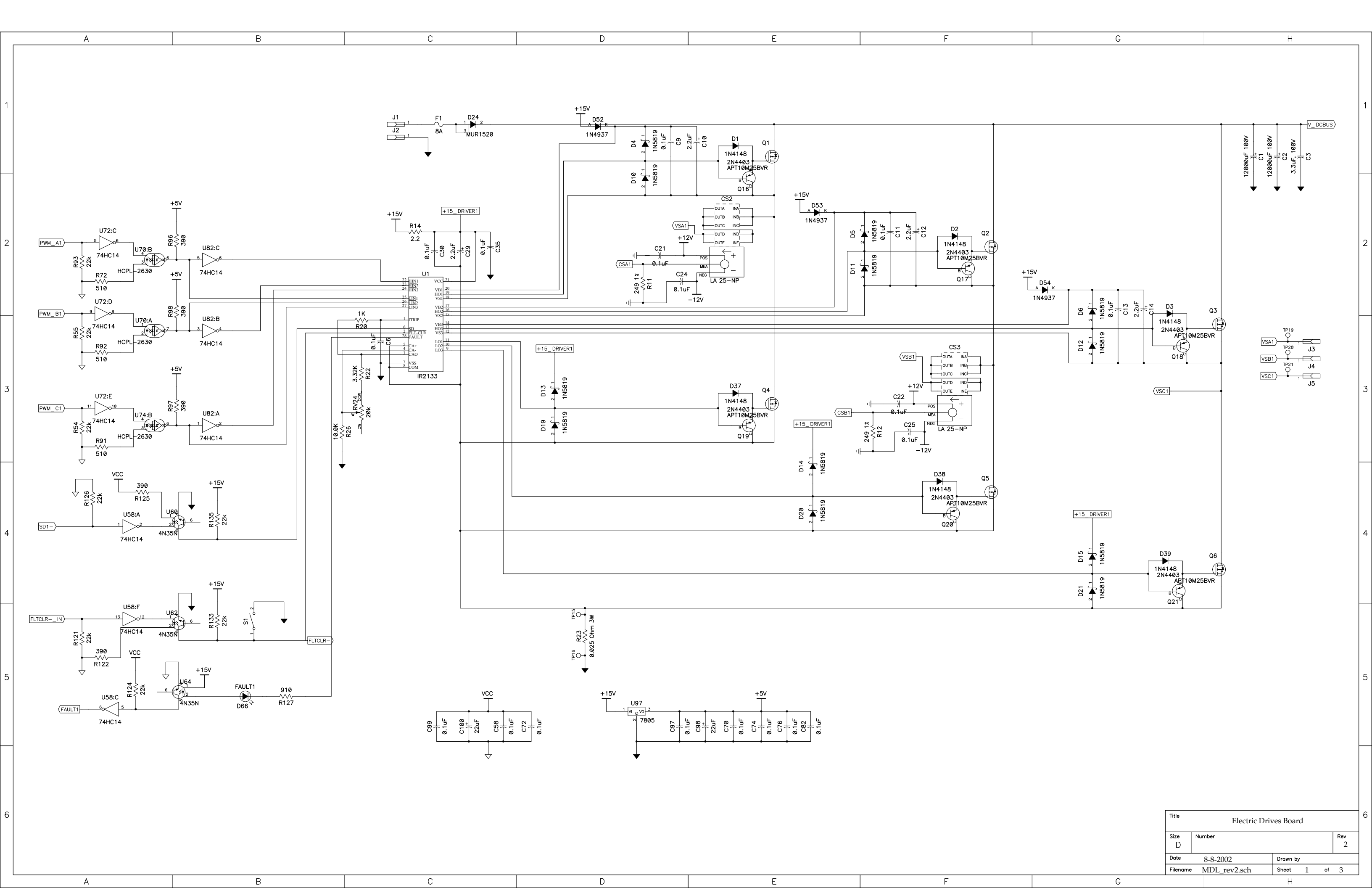


- Use of DSPACE – a rapid prototyping tool
- Simulink as Software
- 42-V Machines
- Active Load (4-Quadrant)
- Only Losses need to be supplied

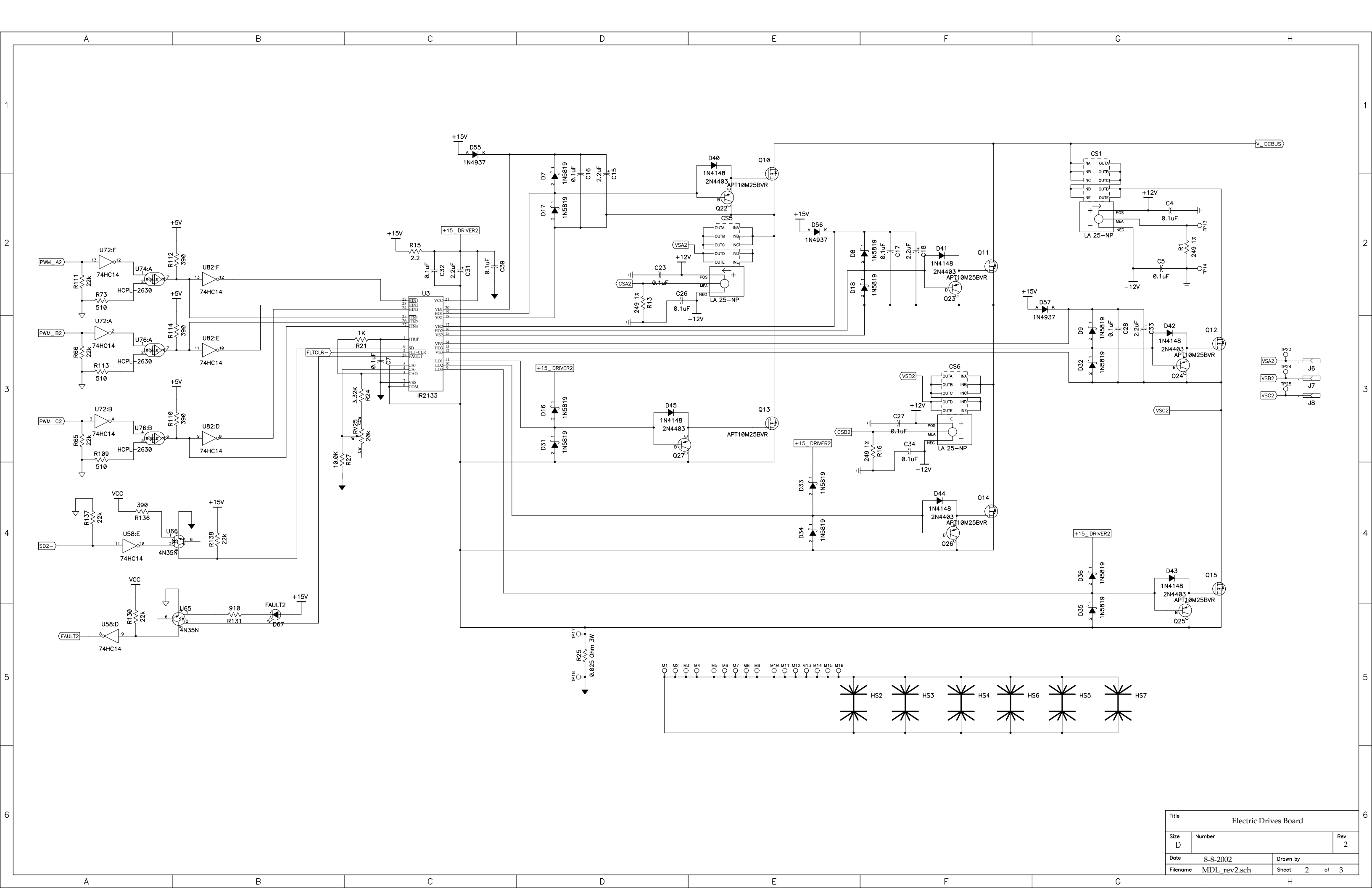
* Co-funded by NASA/NAG3-2468

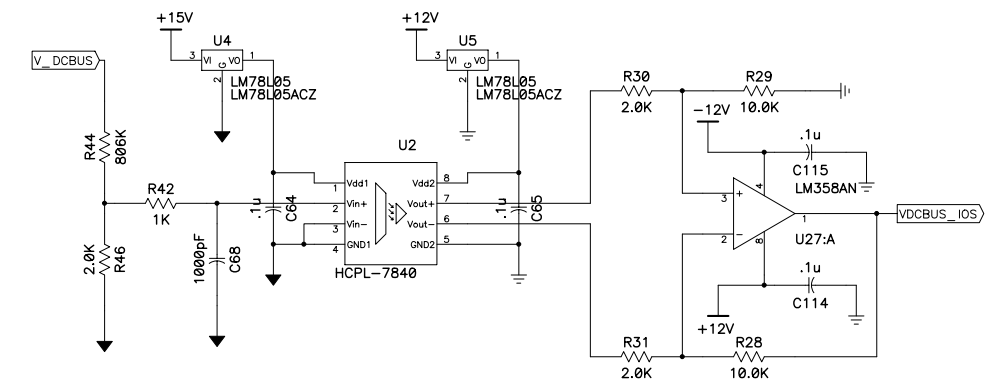
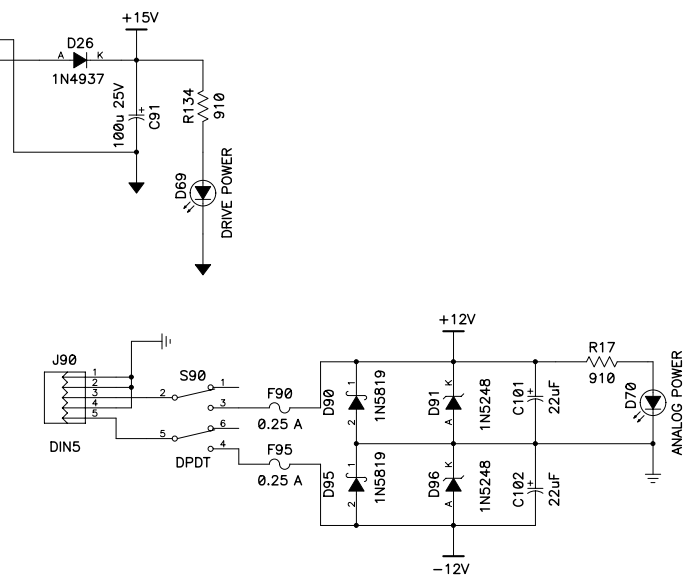
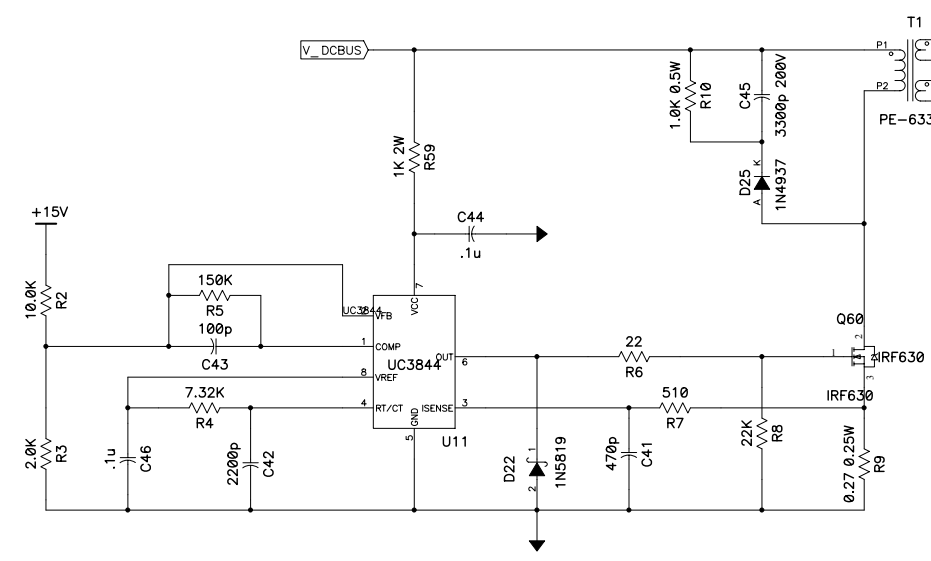
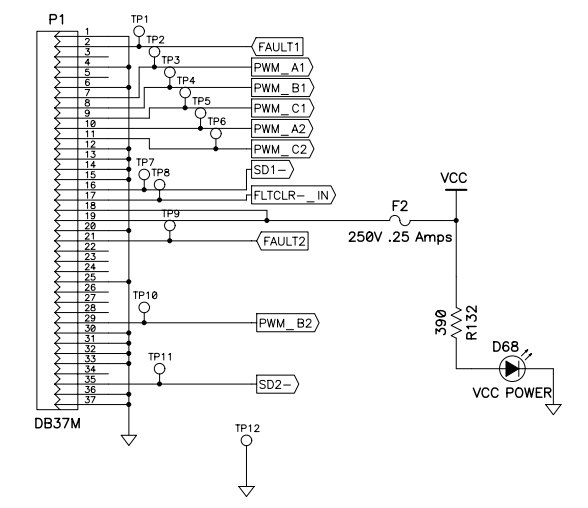
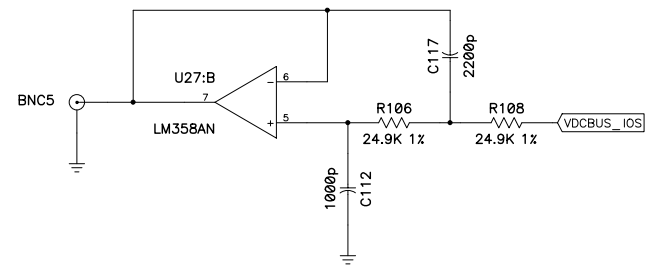
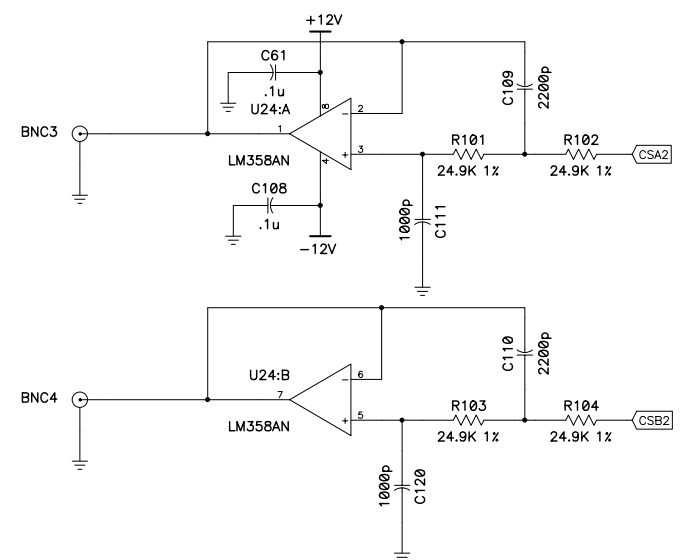
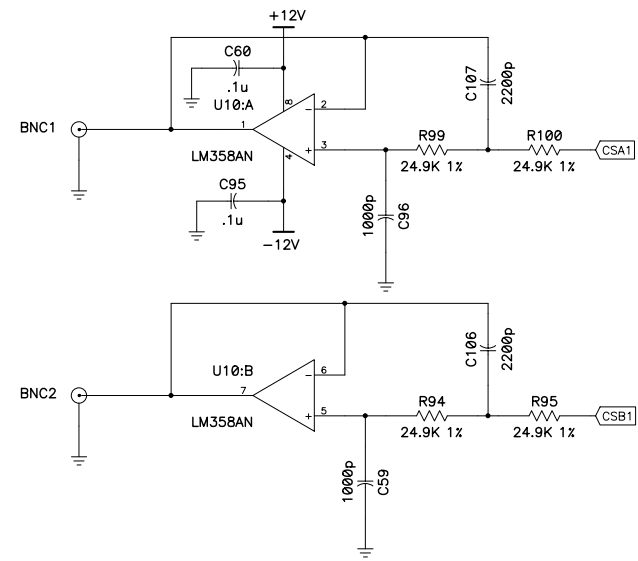
Reference: "Restructuring of First Courses in Power Electronics and Electric Drives that Integrates Digital Control" *IEEE Transactions on Power Electronics*, Vol. 18, No. 1, January 2003.





Title			Electric Drives Board		
Size	Number				Rev
D					2
Date	8-8-2002		Drawn by		
Filename	MDL_rev2.sch		Sheet 1 of 3		





Title			Electric Drives Board		
Size	Number				Rev
D					2
Date	8-8-2002		Drawn by		
Filename	MDL_rev2.sch		Sheet	3	of 3